



Rotary Airlocks

SIMATEK CO., LTD.

Simatek

Air Pollution Control Systems

GERMAN STANDARD

SIMATEK CO., LTD.



High Resistance Temperature Up to 350 °C

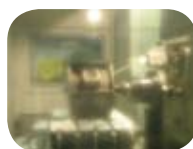


SIMATEK CO., LTD.



20/9 M6. Soi Chatu Chot 4, Chatu Chot Rd.,
Or-Nerng, Saimai, Bangkok 10220 THAILAND.
Tel:+66 2974 5630 Fax:+66 2974 5640

www.simatekasia.com www.simatek.co.th
e-mail : office@simatekasia.com



Rotary Airlock

SIMATEK CO., LTD.

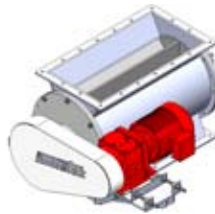
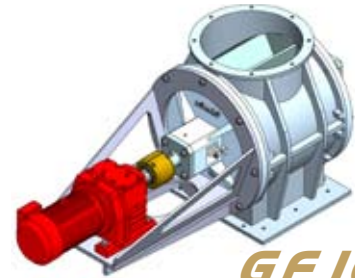
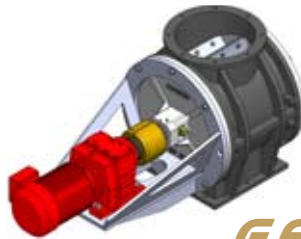
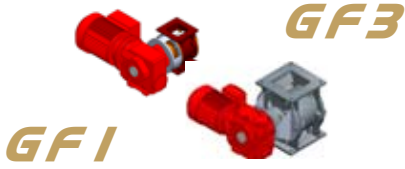


Rotary Airlocks

GERMAN STANDARD

SIMATEK CO., LTD.

Simatek
Air Pollution Control Systems



Rotary Air Lock / Rotary Valve

Simatek produce Rotary of Sturdy design, Which require a minimum of maintenance. Simatek Rotary valve are available in difference Execution, adapted to the specific Product to be handled.

Simatek design the Rotary Valve are supplied With extended bearing, but they are also Available with alternative types of sealing. The Ideal rotary valve also flexible for pneumatic-Transport system and Dosing system.

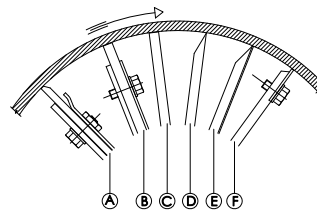


SIMATEK CO., LTD.

20/9 M6. Soi Chatu Chot 4, Chatu Chot Rd.,
Or-Nerng, Saimai, Bangkok 10220 THAILAND.
Tel: +66 2974 5630 Fax: +66 2974 5640

www.simatekasia.com www.simatek.co.th
e-mail : office@simatekasia.com

Execution of Rotor Blades



- A. Rotor blade with Vulkollan wear rubber and steel-edge protection
- B. Firm blade with Vulkollan wear rubber
- C. Firm blade
- D. Firm blade, chamfered at the top of the blade
- E. Firm blade, chamfered on all sides
- F. Rotor blade with lamella of hardened steel

Alternative Material Choice

Valve housing and end covers : Cast iron, hard-chromed cast iron, stainless steel AISI 304/306, or aluminium

Rotor : St37, St 37 with Vulkollan wear rubber, stainless steel AISI 304/316, or stainless AISI 304/316 with Vulkollan were rubber

Description

The rotary Valves are Danish manufacture and distinguish themselves by great reliability in service, and the possibility of combining materials as well as the design of rotor blades and stuffing boxes. The valves are available with or without geared motors, possibly with chain drive.

Several types of rotary valves can be driven direct by means of a hydraulic motor.

Agent / Distributors :